

O₂ Managed Backup & Restore Connection

Příručka uživatele

Verze: 1.0



O₂

Obsah

1. O dokumentu.....	2
2. Konfigurace service providera.....	2
3. WAN Accelerator.....	5
4. Vytvoření copy jobu.....	8
5. Přehled síťových portů.....	12

1. O dokumentu

Tento dokument slouží jako základní návod, jak připojit Váš Veeam B&R server k technologii CloudConnect, provozované u O2 Czech Republic a.s. Návod je určen pro všechny zákazníky společnosti O2 Czech Republic a.s., kteří využívají službu MBR Connection.

2. Konfigurace service providera

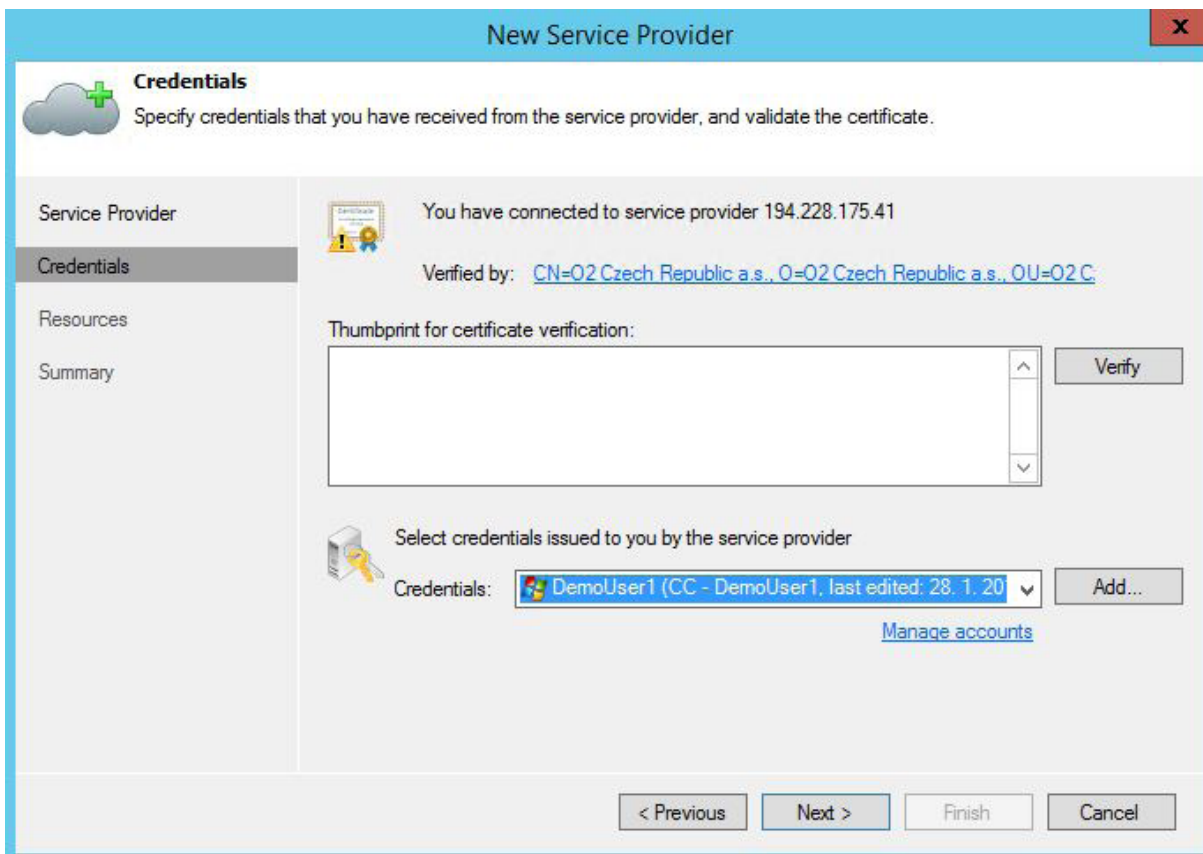
Spustíme konzoli Veeam B&R.



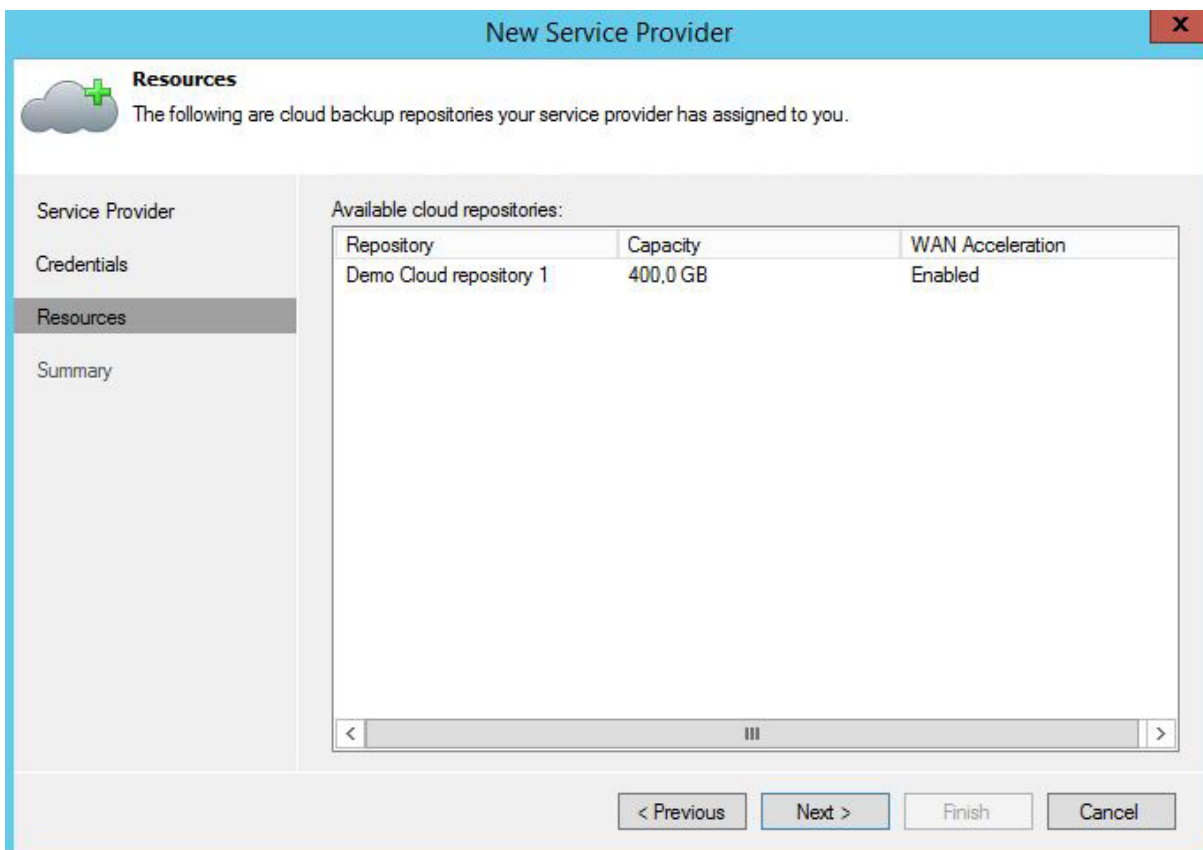
Klikněte na položku *Add Service Provider* v sekci *Backup Infrastructure*.

The screenshot shows the 'New Service Provider' configuration dialog box. The title bar reads 'New Service Provider'. Below the title bar, there is a 'Service Provider' section with a cloud icon and a plus sign. The text says: 'Type in DNS name or IP address and a port number received from the service provider. If you are using more than one service provider, add a custom description to more easily distinguish between them.' On the left side, there is a sidebar with four tabs: 'Service Provider', 'Credentials', 'Resources', and 'Summary'. The 'Service Provider' tab is selected. The main area contains three input fields: 'DNS name or IP address:' (a text box), 'Description:' (a larger text box), and 'Port:' (a spinner box with '6180' selected). At the bottom, there are four buttons: '< Previous', 'Next >', 'Finish', and 'Cancel'.

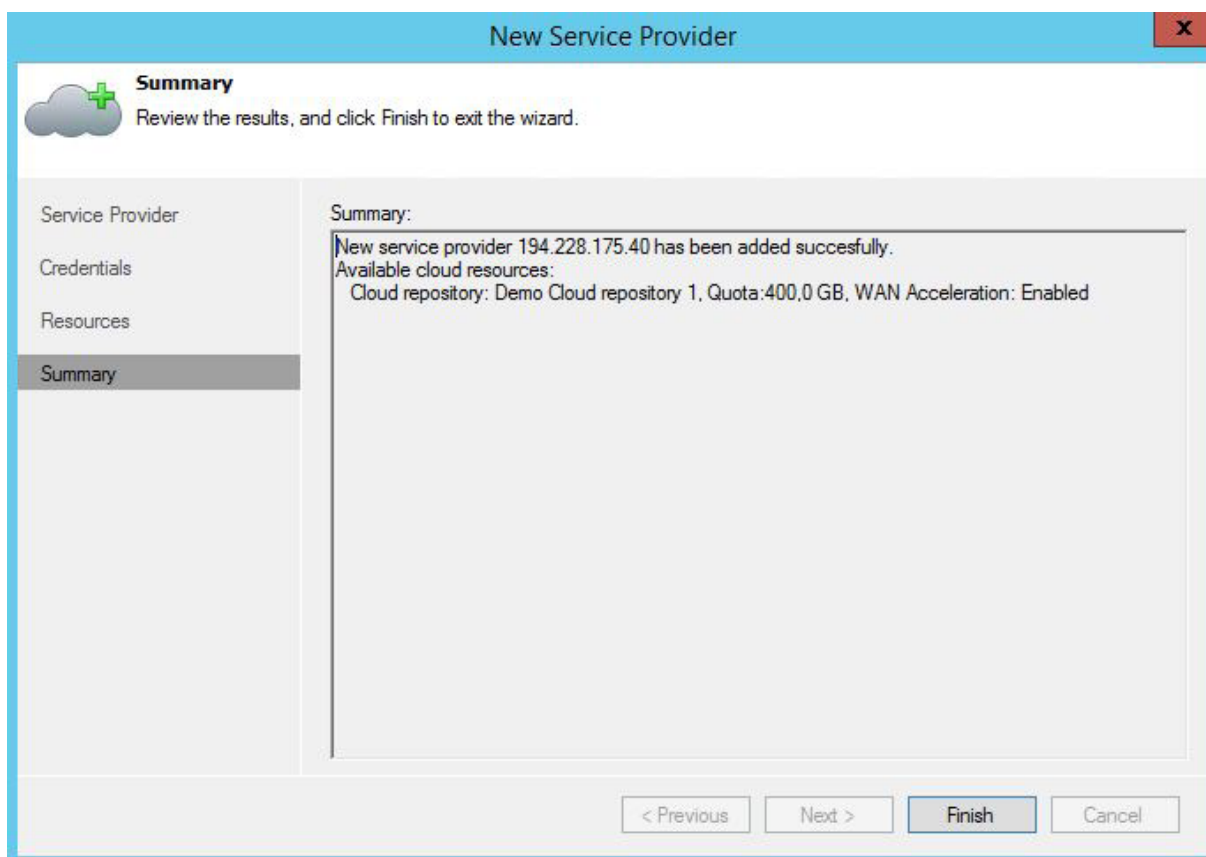
Vložte DNS či IP adresu Service Providera. (194.228.175.40)



Vložte thumbprint pro verifikaci certifikátu 66CC847E40F9604CE345FC43F7DDDF059BFC948D a zadejte Credentials, které jste získali od O2.



Informace o dostupném Repository.



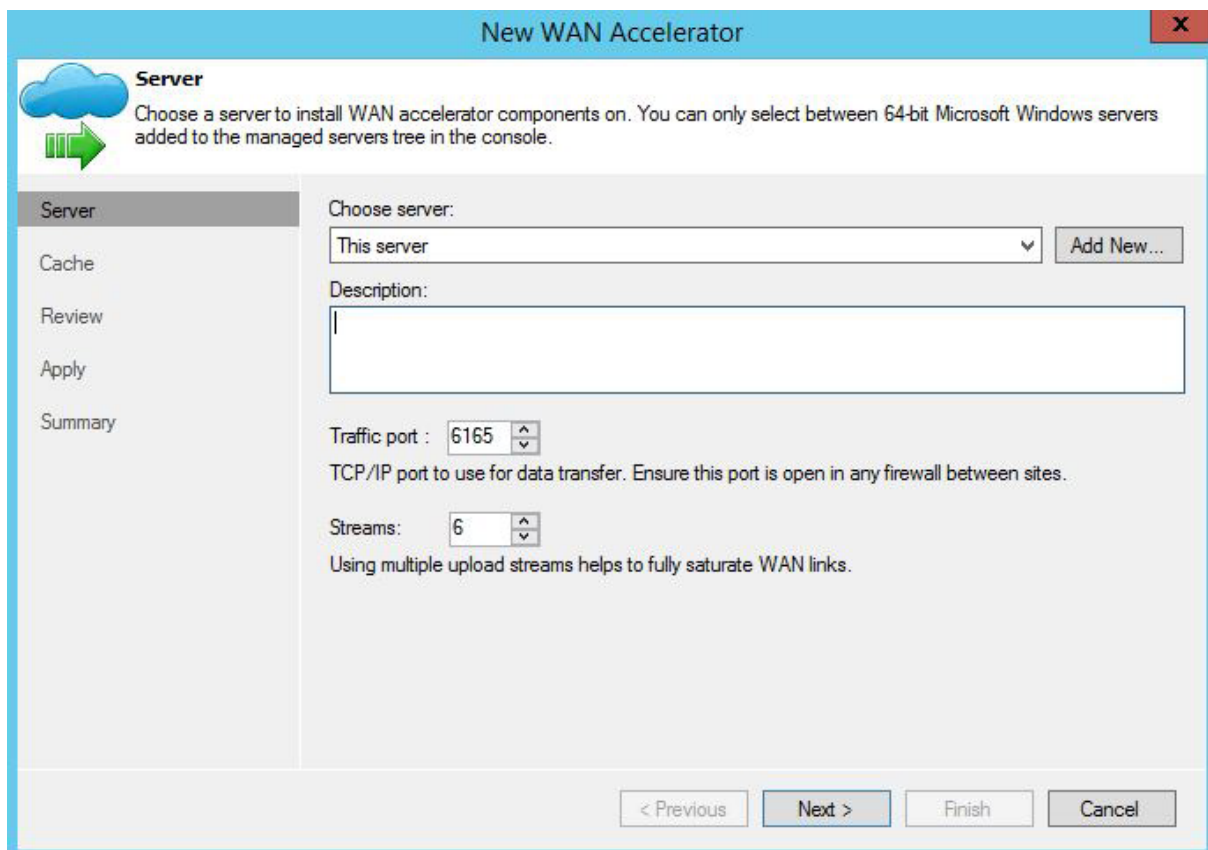
Hotovo.

3. WAN Accelerator

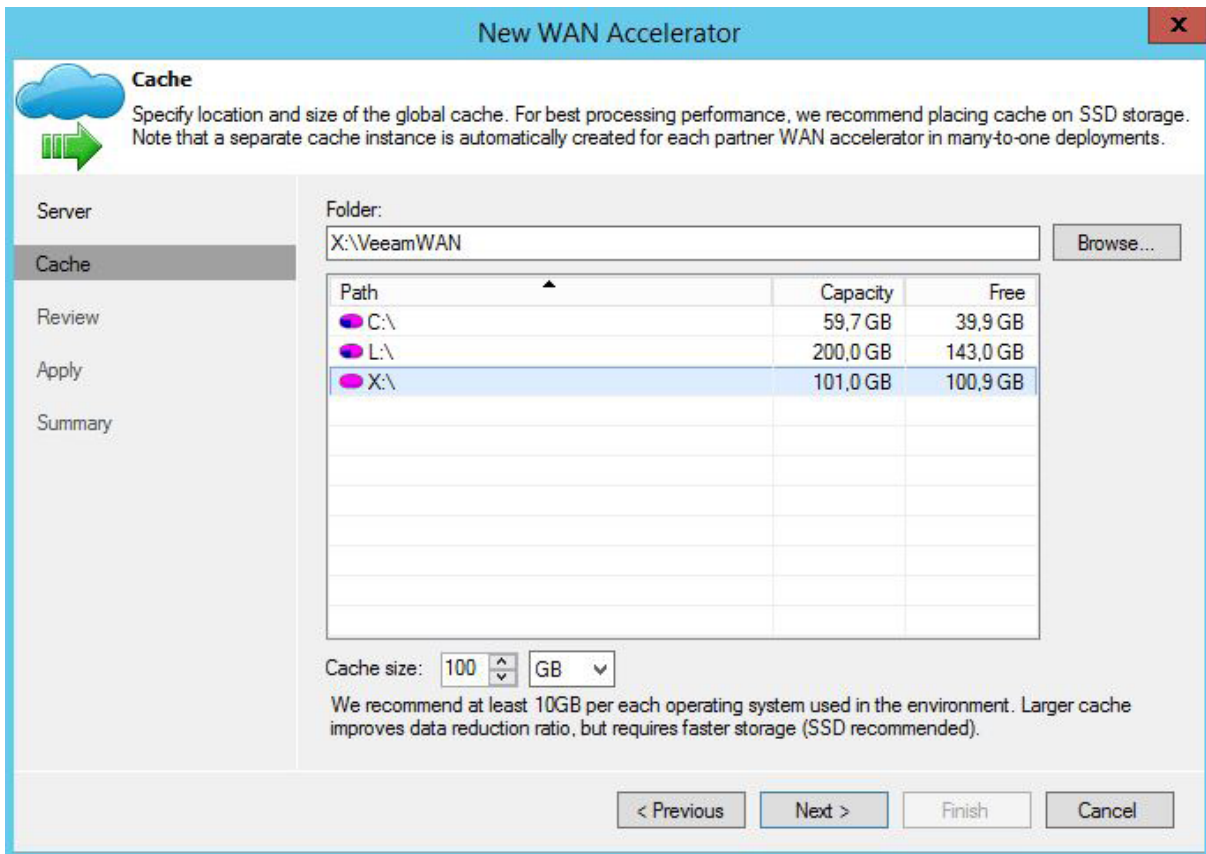
Pokud vlastníte Veeam Enterprise Plus licenci, můžete využít WAN akceleraci.



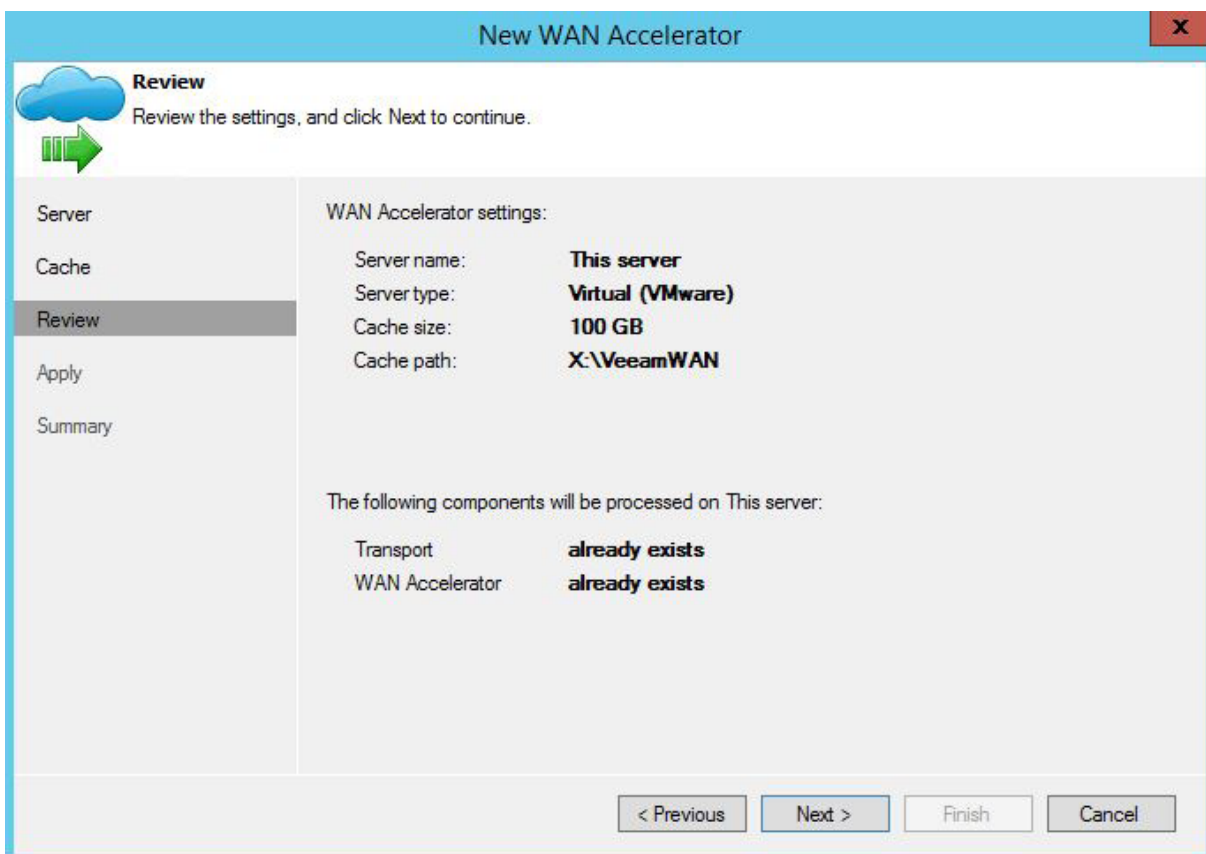
Zvolte Add WAN Accelerator.



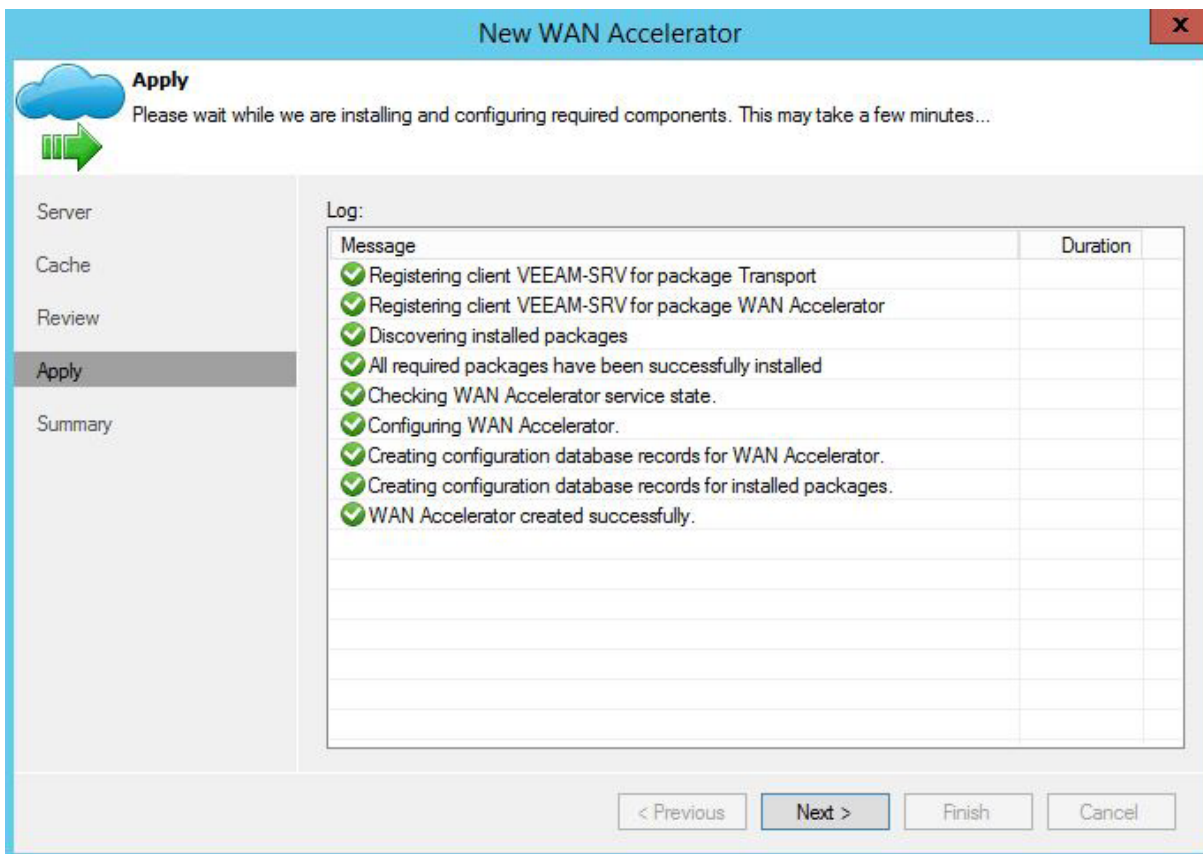
Zvolte parametry.



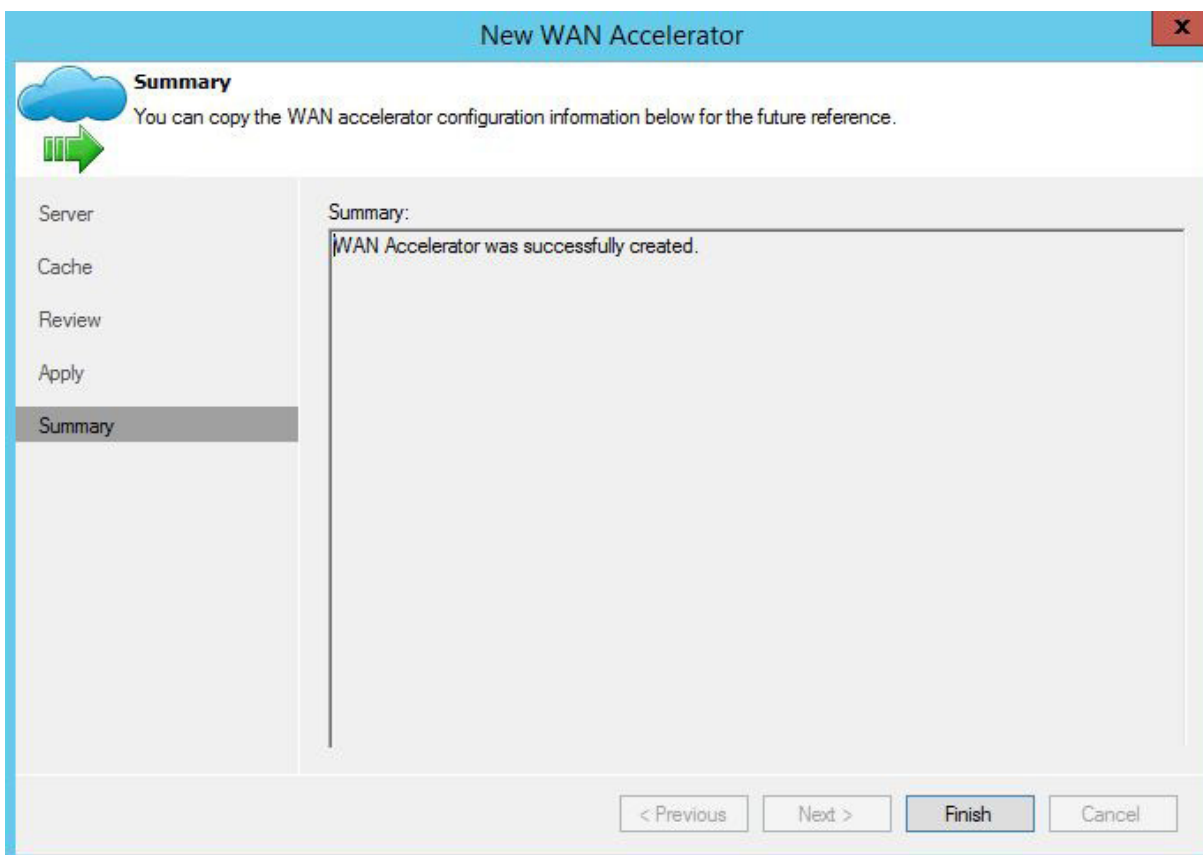
Vytvořte Cache, nejlépe na velmi rychlých discích.



Summary.



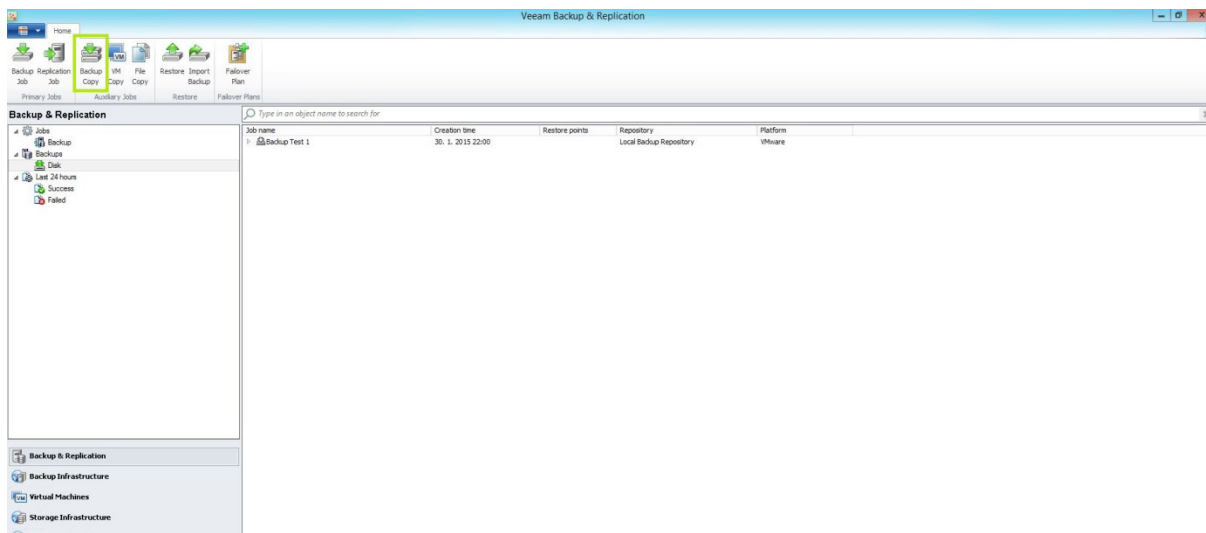
Instalace.



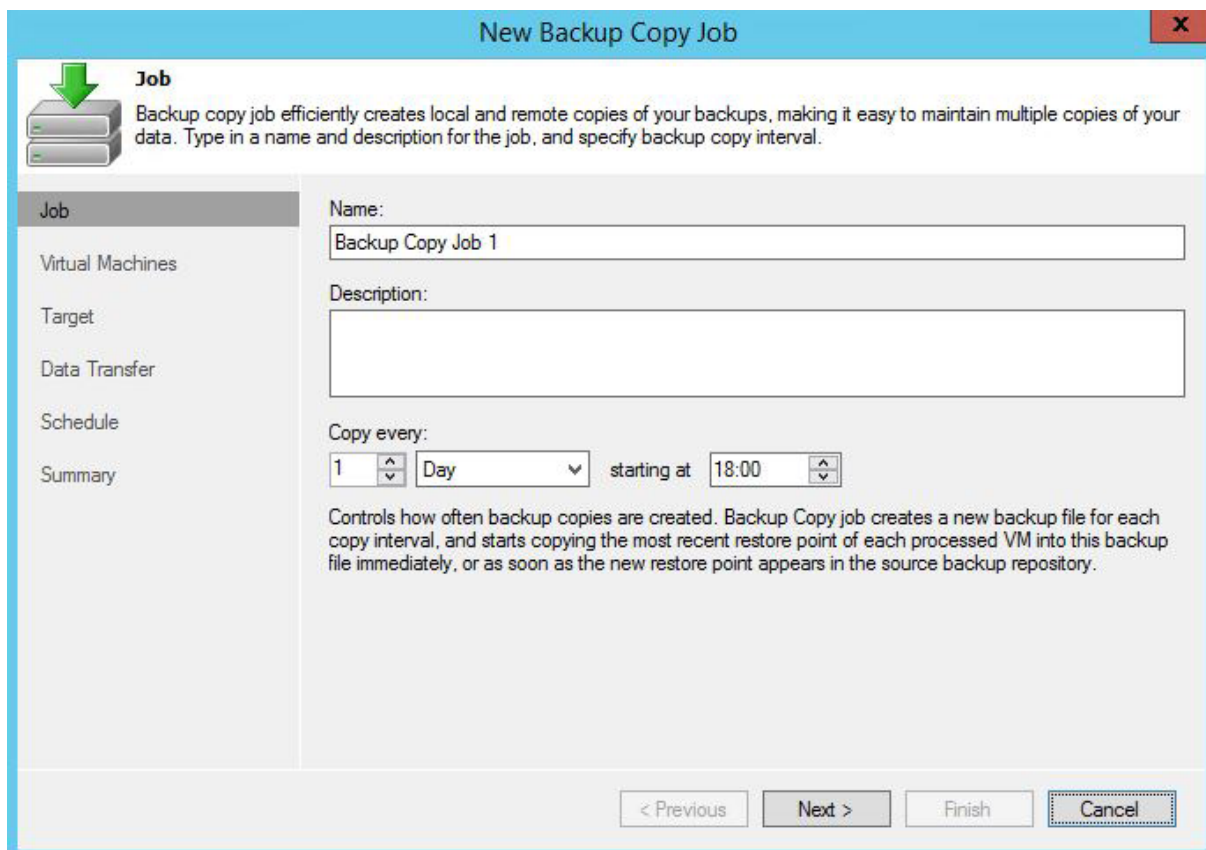
Instalace.

4. Vytvoření copy jobu

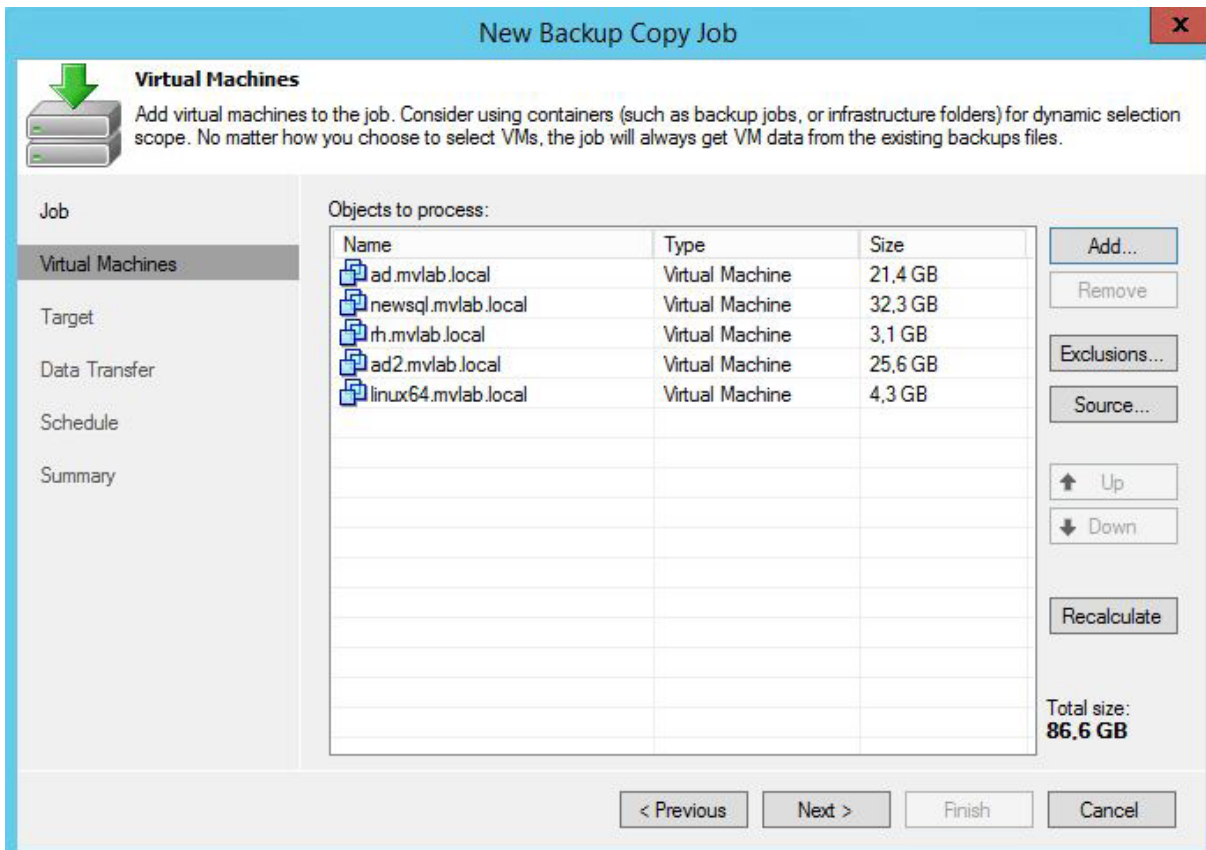
Vytvoření backup copy úlohy s WAN či bez WAN akcelerace.



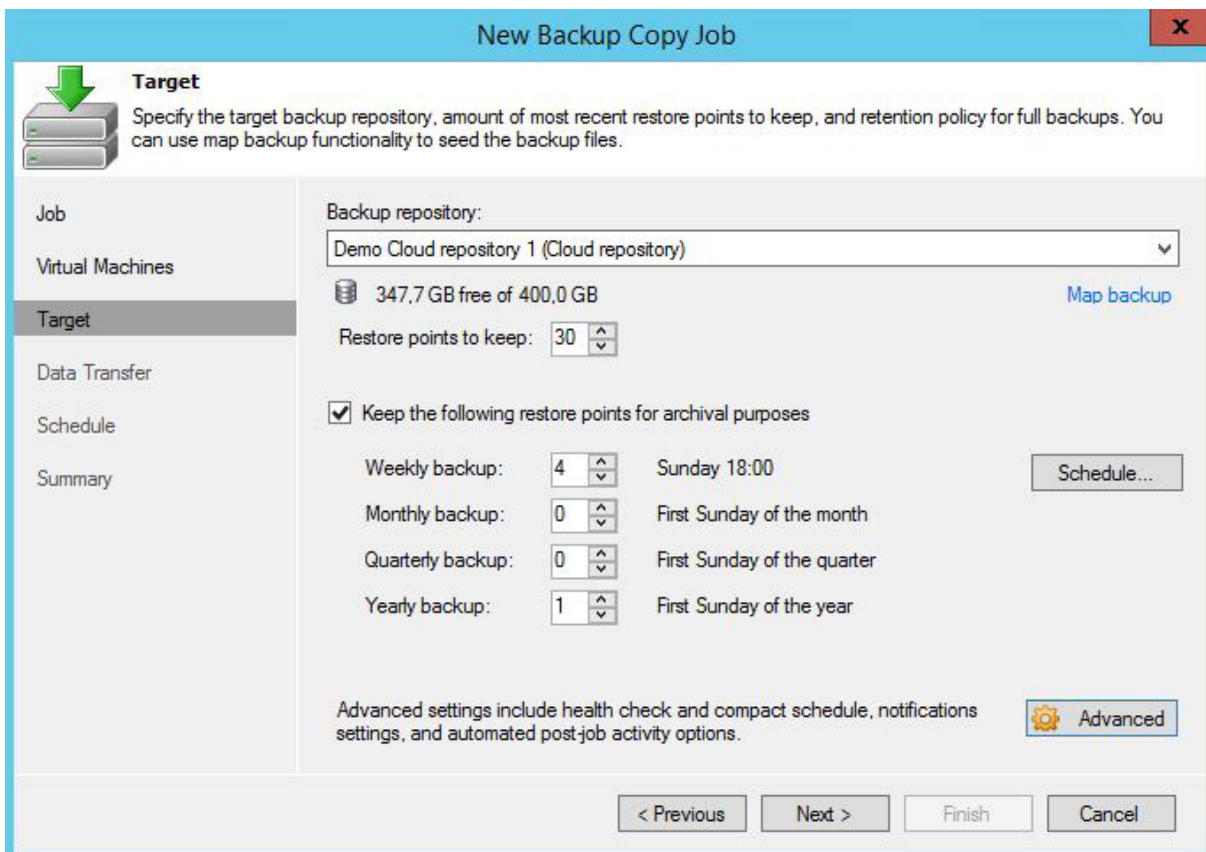
V horním menu vybereme Backup Copy.



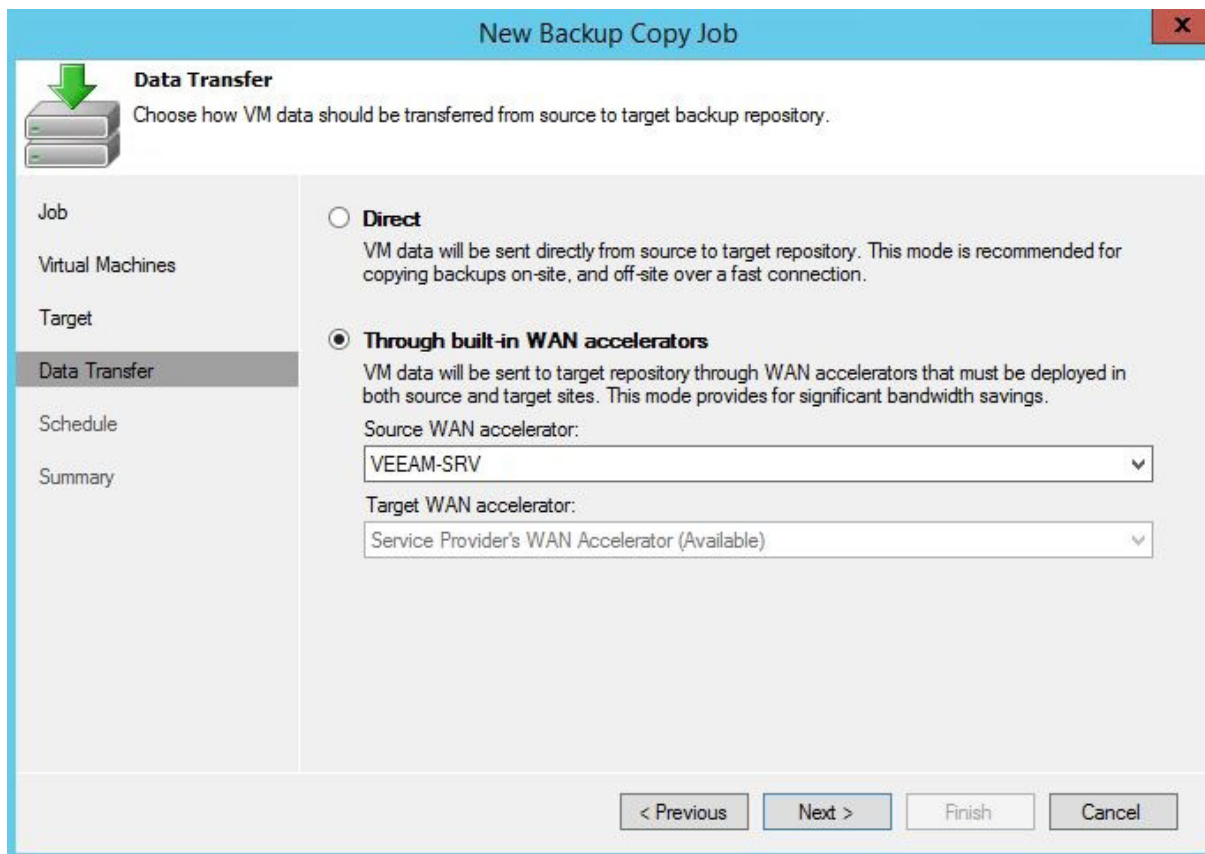
Zvolte interval.



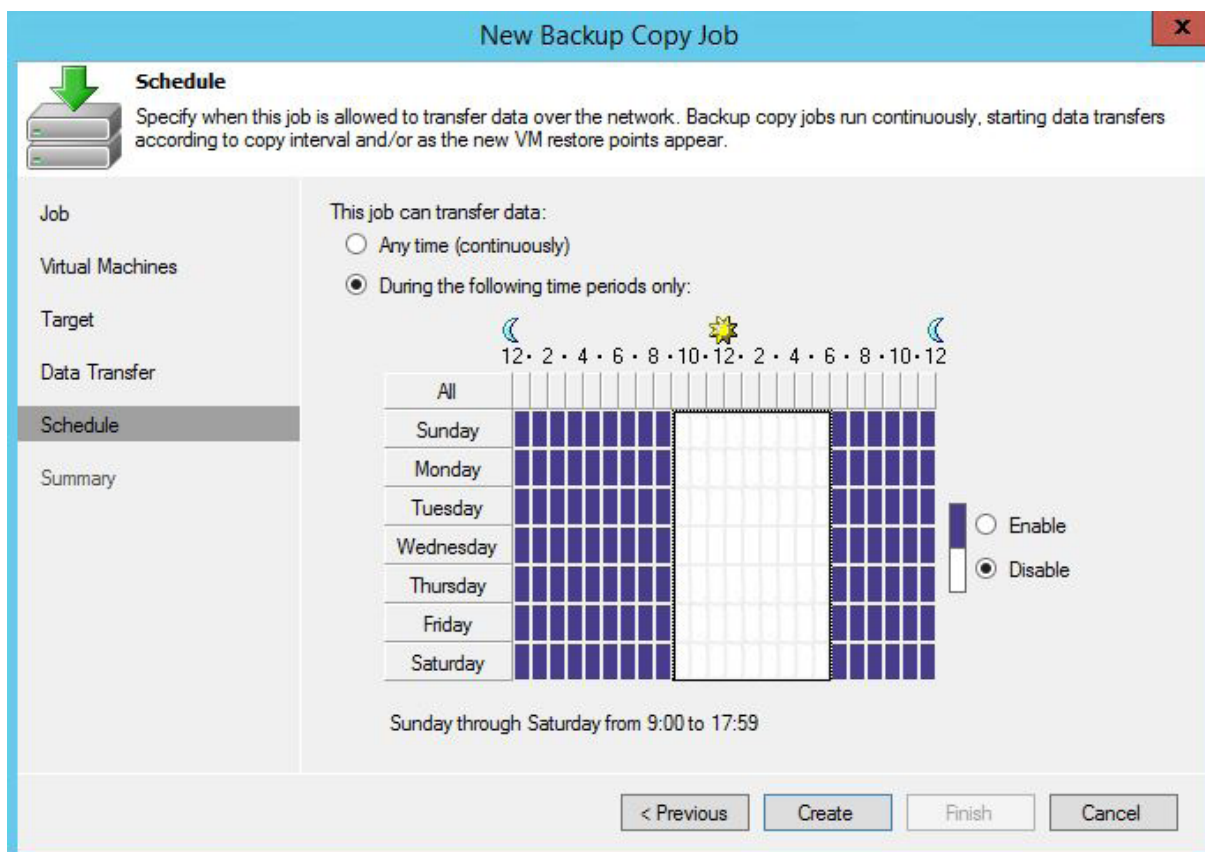
Vyberte virtuální stroje.



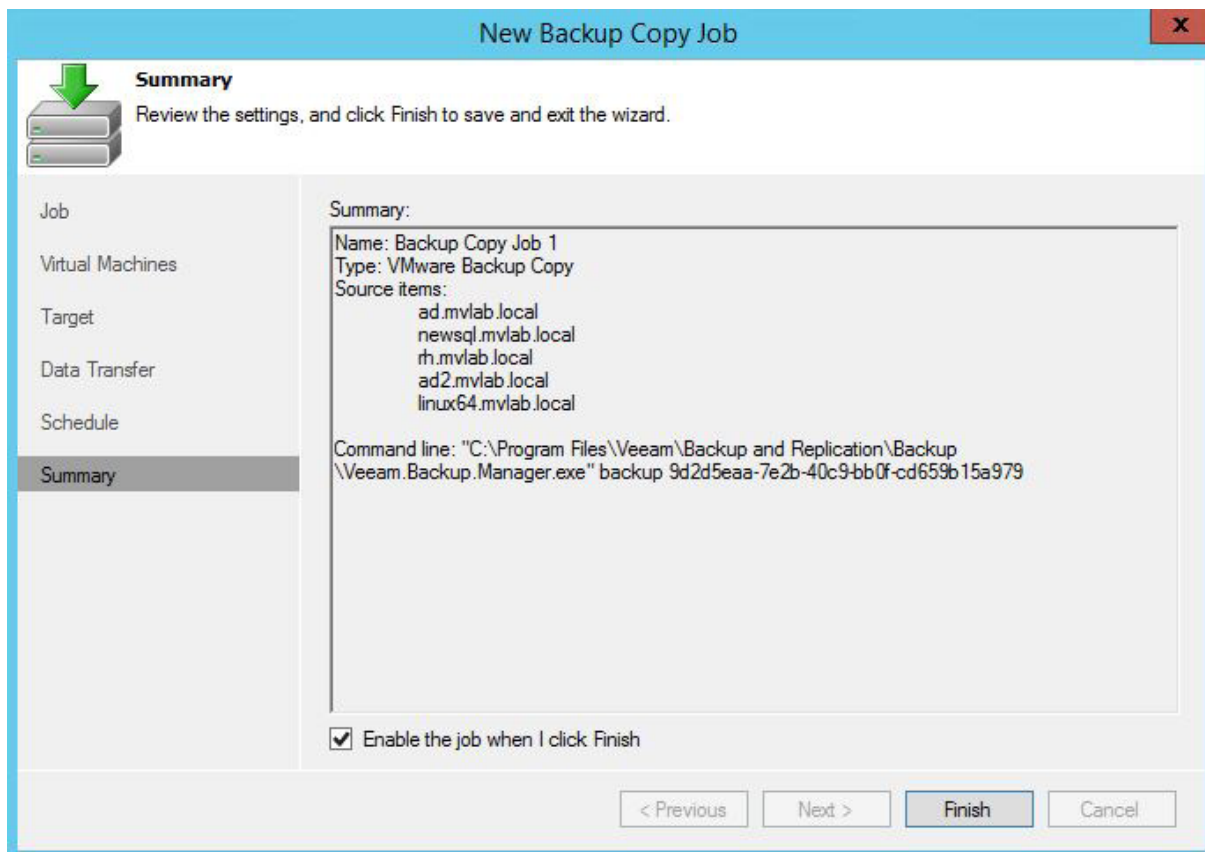
Vyberte úložiště a zvolte si retenci.



Pokud máte nakonfigurovaný WAN akcelerátor, zvolte Through built-in WAN accelerators, pokud ne, zvolte Direct.



Zvolte časové okno pro přenos dat.



Hotovo.

5. Přehled síťových portů

Used Ports

The following table describes network ports that must be opened to ensure proper communication of components in the Veeam Cloud Connect infrastructure.

From	To	Protocol	Port	Notes
Cloud Gateway	SP Veeam backup server	TCP	6169	Port on the SP Veeam backup server used to listen to cloud commands from the user side. User cloud commands are passed to the Veeam Backup Cloud Service via the cloud gateway.
SP Veeam backup server	Cloud gateway	TCP	6168	Port on the cloud gateway used to listen for cloud commands from the Veeam Backup Cloud Service. The service cloud commands from the Veeam Backup Cloud Service are sent to set up, delete and check the status of data transport channels between tenants and the cloud repository.
User Veeam backup server	Cloud gateway	TCP	6180	Port on the cloud gateway used to transport VM data from users to the cloud repository.

To learn what ports are required for other components in the Veeam cloud connect infrastructure, see the *Ports* section in Veeam Backup & Replication User Guide at: <http://www.veeam.com/documentation-guides-datasheets.html>.